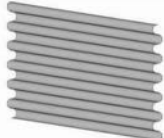


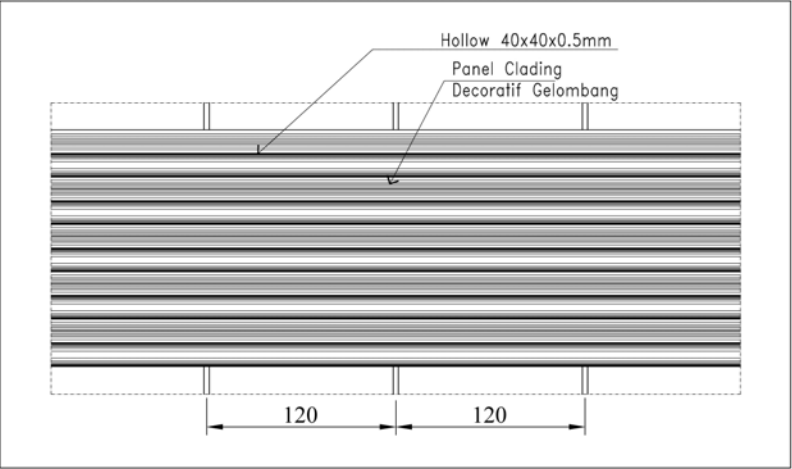




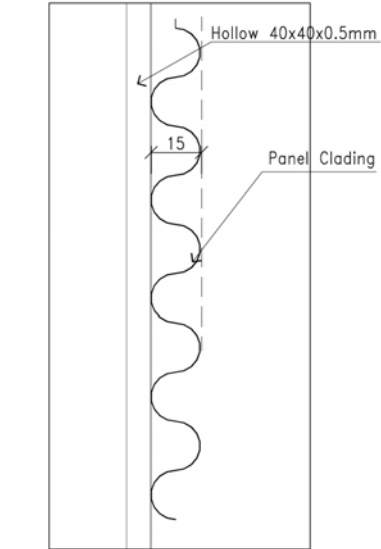
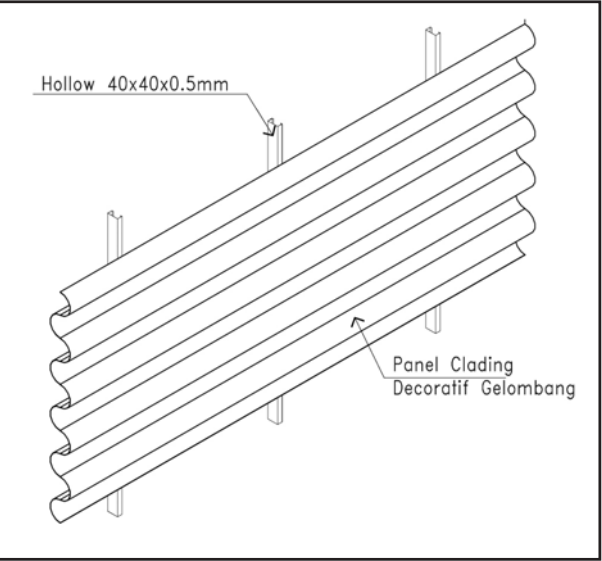
GSRI CITRA, PEGADUNGAN - JAKARTA

PANELLUX® DEKORATIF GELOMBANG

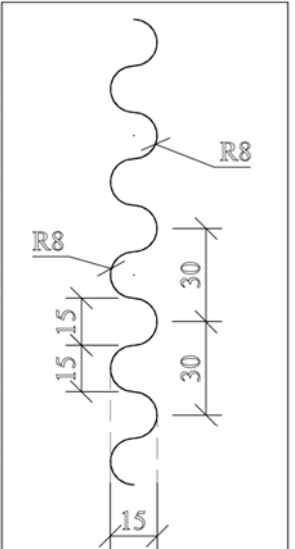
PRODUCT	INFORMATION
 DM-G	Wave Decorative Panel Material : KIRANA™ Steel Width : 160 mm Length : Custom Standard Color : White, Silver, Cisadane Brown (Light Brown), Anti Cooper (Dark Brown)
 MS-75	Metal Stud 75 x 34 Material : Zinalume® Steel Length : 3 m
 LG-5050	Border List 50 x 50 Material : Zinalume® Steel Length : 3 m



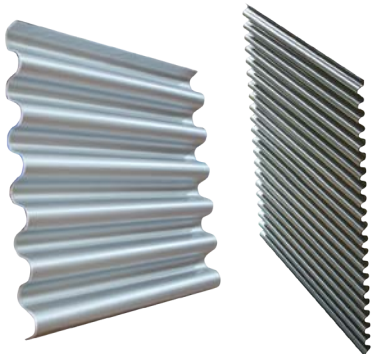
01 REF SKALA 1:100
FRONT VIEW



01 REF SKALA 1:100
SIDE VIEW



01 REF SKALA 1:100
DETAIL PANEL WAVE DECORATIVE CLADDING



WAVE DECORATIVE
CLADDING



PANELLUX® WAVE DECORATIVE CLADDING

PANELLUX® Wave Decorative Cladding covers your wall with decorative steel with small, wavy profiles. With width dimension of 160mm, it will give your cladding an industrial, minimalistic look. It is suitable for both interior and exterior cladding application such as residential complexes, shop houses, offices, restaurants, factories, and others.

PANELLUX® Wave Decorative Cladding is made from Bluescope Steel Indonesia Pre-painted KIRANA™ Steel.